



1/2 HP STANDARD



BIO SHIELD (Antimicrobial) for **ODOR PROTECTION!** Disposers are treated with an antimicrobial agent molded inside providing protection against odor causing bacteria growth.



THE TORQUE MASTER GRINDING SYSTEM is a combination of computer designed and balanced components working in unison to provide superior torque grind speed and long system life.

MASTER EDITION

Easy and Fast to Install

WASTEMAID disposers feature Speed Master Mounting, an exclusive system that provides fast and economical installation.

Corrosion Proof

The WASTEMAID 158 carries a lifetime warranty against failure due to corrosion.

Permanent Magnet Motors

WASTEMAID motors offer maximum torque instantly with the power to cut through potential jams.

Compact and Lightweight

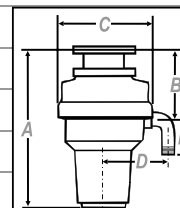
The compact design of your WASTEMAID allows inclusion where limited under counter space is available.

Removable Splash Guard

All WASTEMAID models have a removable splash guard, ideal for easy cleaning and replacement.

SPECIFICATIONS

SPECIFICATIONS	MODEL #158
HORSEPOWER	1/2 HP
MOTOR SPEED RPM	2600 RPM
VOLTAGE	100v / 120v / 220-240v
AMPS	4.5 / 4.5 / 2.25
CYCLES	50/60
MOTOR TYPE	Permanent Magnet
SPLASH GUARD	PVC
DRAIN OUTLET	Polycarbonate 940
GRIND RING	Stainless Steel
SWIVEL IMPELLERS	Stainless Steel
BALANCED TURNTABLE	Stainless Steel
BALANCED ARMATURE SHAFT	Stainless Steel
HOPPER	Polycarbonate 940
DRAIN HOUSING	Phenolic EA-5551J
APPLIANCE PROTECTOR	Manual Reset
SINK FLANGE	Polycarbonate 940
STOPPER	ABS
BEARINGS	Permanently Lubricated, Sleeve Type
SOUND SHELL	Partial
INDIVIDUAL SHIPPING WEIGHT	4.4 KG
MASTER CARTON WEIGHT (4 UNITS)	18.6 KG
MEASUREMENT A	355 MM
MEASUREMENT B	165 MM
MEASUREMENT C	121 MM
MEASUREMENT D	135 MM White Elbow / 140 MM Black Elbow
MEASUREMENT E	70 MM White Elbow / 100 MM Black Elbow
LIFETIME CORROSION GUARANTEE	Yes



Anaheim Marketing International

4332 E. La Palma Ave. Anaheim CA 92807 USA Telephone (714) 993-1707 Fax (714) 993-1930
email: ContactUs@AnaheimMarketing.com website: www.AnaheimMarketing.com